



Matthew G. Bevin
Governor

COMMONWEALTH OF KENTUCKY
TRANSPORTATION CABINET
Frankfort, Kentucky 40622
www.transportation.ky.gov/

Greg Thomas
Secretary

July 25, 2018

CALL NO. 103
CONTRACT ID NO. 181025
ADDENDUM # 3

Subject: BOONE COUNTY, STP 8200(017)
Letting July 27, 2018

- (1) Revised - Proposal Bid Items - Pages 237-243 of 243
- (3) Revised - Plan Sheets - R2g, T13, T14, and T16

Proposal revisions are available at <http://transportation.ky.gov/Construction-Procurement/>.

If you have any questions, please contact us at 502-564-3500.

Sincerely,

A handwritten signature in cursive script that reads "Rachel Mills".

Rachel Mills, P.E.
Director
Division of Construction Procurement

RM:mr
Enclosures



An Equal Opportunity Employer M/F/D

PROPOSAL BID ITEMS

REVISED ADDENDUM #3: 7-25-18

181025

Page 1 of 7

Report Date 7/25/18

Section: 0001 - PAVING-ALT #1

| LINE | BID CODE | ALT | DESCRIPTION | QUANTITY | UNIT | UNIT PRIC | FP | AMOUNT |
|------|----------|-----|---|--------------|------|-----------|----|--------------|
| 0010 | 00003 | | CRUSHED STONE BASE | 51,649.00 | TON | | \$ | |
| 0020 | 00008 | | CEMENT STABILIZED ROADBED | 120,196.00 | SQYD | | \$ | |
| 0030 | 00020 | | TRAFFIC BOUND BASE | 152.00 | TON | | \$ | |
| 0040 | 00100 | | ASPHALT SEAL AGGREGATE | 24.60 | TON | | \$ | |
| 0050 | 00103 | | ASPHALT SEAL COAT | 3.00 | TON | | \$ | |
| 0060 | 00214 | | CL3 ASPH BASE 1.00D PG64-22 | 70,136.00 | TON | | \$ | |
| 0070 | 00356 | | ASPHALT MATERIAL FOR TACK | 68.00 | TON | | \$ | |
| 0080 | 00358 | | ASPHALT CURING SEAL | 120.00 | TON | | \$ | |
| 0090 | 00388 | | CL3 ASPH SURF 0.38B PG64-22 | 11,851.00 | TON | | \$ | |
| 0100 | 01810 | | STANDARD CURB AND GUTTER | 30,100.00 | LF | | \$ | |
| 0110 | 02084 | | JPC PAVEMENT-8 IN | 1,455.00 | SQYD | | \$ | |
| 0120 | 02101 | | CEM CONC ENT PAVEMENT-8 IN | 963.00 | SQYD | | \$ | |
| 0130 | 02542 | | CEMENT | 2,294.00 | TON | | \$ | |
| 0140 | 02677 | | ASPHALT PAVE MILLING & TEXTURING | 138.00 | TON | | \$ | |
| 0150 | 02702 | | SAND FOR BLOTTER | 301.00 | TON | | \$ | |
| 0160 | 10020NS | | FUEL ADJUSTMENT | 205,212.00 | DOLL | \$1.00 | \$ | \$205,212.00 |
| 0170 | 10030NS | | ASPHALT ADJUSTMENT | 320,611.00 | DOLL | \$1.00 | \$ | \$320,611.00 |
| 0180 | 23379EC | | STAMPED CONCRETE | 425.00 | SQYD | | \$ | |
| 0190 | 24779EC | | INTELLIGENT COMPACTION FOR SOIL | 242,795.00 | CUYD | | \$ | |
| 0200 | 24780EC | | INTELLIGENT COMPACTION FOR AGGREGATE | 51,183.00 | TON | | \$ | |
| 0210 | 24781EC | | INTELLIGENT COMPACTION FOR ASPHALT | 81,631.00 | TON | | \$ | |
| 0220 | 24891EC | | PAVE MOUNT INFRARED TEMP EQUIPMENT | 1,857,132.00 | SF | | \$ | |
| 0230 | 24990EC | | INTELLIGENT COMP SUBGRADE STABILIZATION | 120,196.00 | SQYD | | \$ | |

Section: 0002 - PAVING- ALT #2

| LINE | BID CODE | ALT | DESCRIPTION | QUANTITY | UNIT | UNIT PRIC | FP | AMOUNT |
|------|----------|-----|----------------------------------|------------|------|-----------|----|--------------|
| 0240 | 00003 | | CRUSHED STONE BASE | 93,072.00 | TON | | \$ | |
| 0250 | 00008 | | CEMENT STABILIZED ROADBED | 120,145.00 | SQYD | | \$ | |
| 0260 | 00020 | | TRAFFIC BOUND BASE | 152.00 | TON | | \$ | |
| 0270 | 00100 | | ASPHALT SEAL AGGREGATE | 24.60 | TON | | \$ | |
| 0280 | 00103 | | ASPHALT SEAL COAT | 3.00 | TON | | \$ | |
| 0290 | 00214 | | CL3 ASPH BASE 1.00D PG64-22 | 35,984.00 | TON | | \$ | |
| 0300 | 00356 | | ASPHALT MATERIAL FOR TACK | 44.00 | TON | | \$ | |
| 0310 | 00358 | | ASPHALT CURING SEAL | 120.00 | TON | | \$ | |
| 0320 | 00388 | | CL3 ASPH SURF 0.38B PG64-22 | 11,851.00 | TON | | \$ | |
| 0330 | 01810 | | STANDARD CURB AND GUTTER | 30,100.00 | LF | | \$ | |
| 0340 | 02084 | | JPC PAVEMENT-8 IN | 1,455.00 | SQYD | | \$ | |
| 0350 | 02101 | | CEM CONC ENT PAVEMENT-8 IN | 963.00 | SQYD | | \$ | |
| 0360 | 02542 | | CEMENT | 2,293.00 | TON | | \$ | |
| 0370 | 02677 | | ASPHALT PAVE MILLING & TEXTURING | 138.00 | TON | | \$ | |
| 0380 | 02702 | | SAND FOR BLOTTER | 301.00 | TON | | \$ | |
| 0390 | 10020NS | | FUEL ADJUSTMENT | 166,800.00 | DOLL | \$1.00 | \$ | \$166,800.00 |
| 0400 | 10030NS | | ASPHALT ADJUSTMENT | 187,090.00 | DOLL | \$1.00 | \$ | \$187,090.00 |

PROPOSAL BID ITEMS

REVISED ADDENDUM #3: 7-25-18

181025

Page 2 of 7

Report Date 7/25/18

| LINE | BID CODE | ALT | DESCRIPTION | QUANTITY | UNIT | UNIT PRIC | FP | AMOUNT |
|------|----------|-----|---|--------------|------|-----------|----|--------|
| 0410 | 20263ED | | GEOGRID REINFORCEMENT | 120,145.00 | SQYD | | \$ | |
| 0420 | 23379EC | | STAMPED CONCRETE | 425.00 | SQYD | | \$ | |
| 0430 | 24779EC | | INTELLIGENT COMPACTION FOR SOIL | 242,795.00 | CUYD | | \$ | |
| 0440 | 24780EC | | INTELLIGENT COMPACTION FOR AGGREGATE | 92,616.00 | TON | | \$ | |
| 0450 | 24781EC | | INTELLIGENT COMPACTION FOR ASPHALT | 47,479.00 | TON | | \$ | |
| 0460 | 24891EC | | PAVE MOUNT INFRARED TEMP EQUIPMENT | 1,857,132.00 | SF | | \$ | |
| 0470 | 24990EC | | INTELLIGENT COMP SUBGRADE STABILIZATION | 120,145.00 | SQYD | | \$ | |

Section: 0003 - ROADWAY

| LINE | BID CODE | ALT | DESCRIPTION | QUANTITY | UNIT | UNIT PRIC | FP | AMOUNT |
|------|----------|-----|--|------------|------|-----------|----|--------|
| 0480 | 00021 | | DRAINAGE BLANKET-EMBANKMENT | 3,137.00 | CUYD | | \$ | |
| 0490 | 00078 | | CRUSHED AGGREGATE SIZE NO 2 | 2,287.00 | TON | | \$ | |
| 0500 | 01000 | | PERFORATED PIPE-4 IN (REVISED: 7-16-18) | 33,722.00 | LF | | \$ | |
| 0510 | 01010 | | NON-PERFORATED PIPE-4 IN | 96.00 | LF | | \$ | |
| 0520 | 01020 | | PERF PIPE HEADWALL TY 1-4 IN | 1.00 | EACH | | \$ | |
| 0530 | 01024 | | PERF PIPE HEADWALL TY 2-4 IN | 2.00 | EACH | | \$ | |
| 0540 | 01028 | | PERF PIPE HEADWALL TY 3-4 IN | 4.00 | EACH | | \$ | |
| 0550 | 01875 | | STANDARD HEADER CURB | 1,852.00 | LF | | \$ | |
| 0560 | 01890 | | ISLAND HEADER CURB TYPE 1 | 438.00 | LF | | \$ | |
| 0570 | 02091 | | REMOVE PAVEMENT | 1,346.00 | SQYD | | \$ | |
| 0580 | 02159 | | TEMP DITCH | 8,554.00 | LF | | \$ | |
| 0590 | 02160 | | CLEAN TEMP DITCH | 4,279.00 | LF | | \$ | |
| 0600 | 02230 | | EMBANKMENT IN PLACE | 273,799.00 | CUYD | | \$ | |
| 0610 | 02242 | | WATER | 648.00 | MGAL | | \$ | |
| 0620 | 02274 | | FENCE-6 FT CHAIN LINK | 842.00 | LF | | \$ | |
| 0630 | 02287 | | DOUBLE VEHICULAR CHAIN LINK GATE | 1.00 | EACH | | \$ | |
| 0640 | 02351 | | GUARDRAIL-STEEL W BEAM-S FACE | 5,412.50 | LF | | \$ | |
| 0650 | 02360 | | GUARDRAIL TERMINAL SECTION NO 1 | 2.00 | EACH | | \$ | |
| 0660 | 02363 | | GUARDRAIL CONNECTOR TO BRIDGE END TY A | 4.00 | EACH | | \$ | |
| 0670 | 02367 | | GUARDRAIL END TREATMENT TYPE 1 | 5.00 | EACH | | \$ | |
| 0680 | 02381 | | REMOVE GUARDRAIL | 50.00 | LF | | \$ | |
| 0690 | 02391 | | GUARDRAIL END TREATMENT TYPE 4A | 19.00 | EACH | | \$ | |
| 0700 | 02429 | | RIGHT-OF-WAY MONUMENT TYPE 1 | 126.00 | EACH | | \$ | |
| 0710 | 02432 | | WITNESS POST | 3.00 | EACH | | \$ | |
| 0720 | 02484 | | CHANNEL LINING CLASS III | 1,315.00 | TON | | \$ | |
| 0730 | 02545 | | CLEARING AND GRUBBING 72.39 ACRES | 1.00 | LS | | \$ | |
| 0740 | 02562 | | TEMPORARY SIGNS | 1,013.00 | SQFT | | \$ | |
| 0750 | 02585 | | EDGE KEY | 210.00 | LF | | \$ | |
| 0760 | 02599 | | FABRIC-GEOTEXTILE TYPE IV | 51,561.00 | SQYD | | \$ | |
| 0770 | 02650 | | MAINTAIN & CONTROL TRAFFIC | 1.00 | LS | | \$ | |
| 0780 | 02651 | | DIVERSIONS (BY-PASS DETOURS) | 1.00 | LS | | \$ | |
| 0790 | 02671 | | PORTABLE CHANGEABLE MESSAGE SIGN | 4.00 | EACH | | \$ | |
| 0800 | 02676 | | MOBILIZATION FOR MILL & TEXT | 1.00 | LS | | \$ | |
| 0810 | 02690 | | SAFELOADING | 60.00 | CUYD | | \$ | |

PROPOSAL BID ITEMS

181025

Page 3 of 7

Report Date 7/25/18

| LINE | BID CODE | ALT | DESCRIPTION | QUANTITY | UNIT | UNIT PRIC | FP | AMOUNT |
|------|------------|-----|---|------------|------|-----------|----|--------|
| 0820 | 02703 | | SILT TRAP TYPE A | 72.00 | EACH | | \$ | |
| 0830 | 02704 | | SILT TRAP TYPE B | 72.00 | EACH | | \$ | |
| 0840 | 02705 | | SILT TRAP TYPE C | 72.00 | EACH | | \$ | |
| 0850 | 02706 | | CLEAN SILT TRAP TYPE A | 72.00 | EACH | | \$ | |
| 0860 | 02707 | | CLEAN SILT TRAP TYPE B | 72.00 | EACH | | \$ | |
| 0870 | 02708 | | CLEAN SILT TRAP TYPE C | 72.00 | EACH | | \$ | |
| 0880 | 02720 | | SIDEWALK-4 IN CONCRETE | 1,404.00 | SQYD | | \$ | |
| 0890 | 02720 | | SIDEWALK-4 IN CONCRETE SPECIAL SIDEWALK (@ ROUNDABOUT SPLITTER ISLANDS) | 526.00 | SQYD | | \$ | |
| 0900 | 02726 | | STAKING | 1.00 | LS | | \$ | |
| 0905 | 02731 | | REMOVE STRUCTURE (EX. TRIPLE 14'X7' RCBC @ STA 183.00) (ADDED: 7-23-18) | 1.00 | LS | | \$ | |
| 0906 | 02731 | | REMOVE STRUCTURE (STA. 136+42 (ADDED:7-25-18) | 1.00 | LS | | \$ | |
| 0910 | 02775 | | ARROW PANEL | 2.00 | EACH | | \$ | |
| 0920 | 03171 | | CONCRETE BARRIER WALL TYPE 9T | 1,944.00 | LF | | \$ | |
| 0930 | 05950 | | EROSION CONTROL BLANKET | 6,158.00 | SQYD | | \$ | |
| 0940 | 05952 | | TEMP MULCH | 233,578.00 | SQYD | | \$ | |
| 0950 | 05953 | | TEMP SEEDING AND PROTECTION | 175,184.00 | SQYD | | \$ | |
| 0960 | 05963 | | INITIAL FERTILIZER | 6.90 | TON | | \$ | |
| 0970 | 05964 | | 20-10-10 FERTILIZER | 11.50 | TON | | \$ | |
| 0980 | 05985 | | SEEDING AND PROTECTION | 198,270.00 | SQYD | | \$ | |
| 0990 | 05990 | | SODDING | 17,930.00 | SQYD | | \$ | |
| 1000 | 05992 | | AGRICULTURAL LIMESTONE | 138.00 | TON | | \$ | |
| 1010 | 06410 | | STEEL POST TYPE 1 | 1,137.00 | LF | | \$ | |
| 1020 | 06510 | | PAVE STRIPING-TEMP PAINT-4 IN | 101,460.00 | LF | | \$ | |
| 1030 | 06514 | | PAVE STRIPING-PERM PAINT-4 IN | 82,777.00 | LF | | \$ | |
| 1040 | 06516 | | PAVE STRIPING-PERM PAINT-8 IN | 3,268.00 | LF | | \$ | |
| 1050 | 06565 | | PAVE MARKING-THERMO X-WALK-6 IN | 1,722.00 | LF | | \$ | |
| 1060 | 06568 | | PAVE MARKING-THERMO STOP BAR-24IN | 544.00 | LF | | \$ | |
| 1070 | 06570 | | PAVE MARKING-PAINT CROSS-HATCH | 2,972.00 | SQFT | | \$ | |
| 1080 | 06572 | | PAVE MARKING-DOTTED LANE EXTEN | 440.00 | LF | | \$ | |
| 1090 | 06573 | | PAVE MARKING-THERMO STR ARROW | 1.00 | EACH | | \$ | |
| 1100 | 06574 | | PAVE MARKING-THERMO CURV ARROW | 45.00 | EACH | | \$ | |
| 1110 | 06575 | | PAVE MARKING-THERMO COMB ARROW | 7.00 | EACH | | \$ | |
| 1120 | 06589 | | PAVEMENT MARKER TYPE V-MW | 431.00 | EACH | | \$ | |
| 1130 | 06591 | | PAVEMENT MARKER TYPE V-BY | 783.00 | EACH | | \$ | |
| 1140 | 08901 | | CRASH CUSHION TY VI CLASS BT TL2 (REVISED: 7-25-18) | 6.00 | EACH | | \$ | |
| 1150 | 15092 | | S MANHOLE | 1.00 | EACH | | \$ | |
| 1160 | 15094 | | S MANHOLE ADJUST TO GRADE | 7.00 | EACH | | \$ | |
| 1170 | 23158ES505 | | DETECTABLE WARNINGS | 939.00 | SQFT | | \$ | |
| 1180 | 23274EN11F | | TURF REINFORCEMENT MAT 1 | 5,246.00 | SQYD | | \$ | |
| 1190 | 23275EN11F | | TURF REINFORCEMENT MAT 2 | 795.00 | SQYD | | \$ | |
| 1200 | 23276EN11F | | TURF REINFORCEMENT MAT 3 | 351.00 | SQYD | | \$ | |
| 1210 | 23626EC | | DETENTION BASIN (STA 101+56.57) (REVISED: 7-23-18) | 1.00 | LS | | \$ | |

PROPOSAL BID ITEMS

REVISED ADDENDUM #3: 7-25-18

181025

Page 4 of 7

Report Date 7/25/18

| LINE | BID CODE | ALT | DESCRIPTION | QUANTITY | UNIT | UNIT PRIC | FP | AMOUNT |
|------|----------|-----|--|----------|------|-----------|----|--------|
| 1211 | 23626EC | | DETENTION BASIN (STA 194+55.35) (ADDED: 7-23-18) | 1.00 | LS | | \$ | |
| 1220 | 23649EC | | DRAIN POND | 1.00 | LS | | \$ | |
| 1230 | 23791EC | | PAVE STRIPING-CHEVRON MARKINGS | 1,298.00 | SQFT | | \$ | |
| 1240 | 24845EC | | UTILITY COORDINATION | 1.00 | LS | | \$ | |

Section: 0004 - DRAINAGE

| LINE | BID CODE | ALT | DESCRIPTION | QUANTITY | UNIT | UNIT PRIC | FP | AMOUNT |
|------|----------|-----|--|-----------|------|-----------|----|--------------|
| 1250 | 00440 | | ENTRANCE PIPE-15 IN | 199.00 | LF | | \$ | |
| 1260 | 00466 | | CULVERT PIPE-30 IN | 8.00 | LF | | \$ | |
| 1270 | 00470 | | CULVERT PIPE-48 IN | 236.00 | LF | | \$ | |
| 1280 | 00472 | | CULVERT PIPE-60 IN | 201.00 | LF | | \$ | |
| 1290 | 00521 | | STORM SEWER PIPE-15 IN | 8,149.00 | LF | | \$ | |
| 1300 | 00522 | | STORM SEWER PIPE-18 IN | 4,495.00 | LF | | \$ | |
| 1310 | 00524 | | STORM SEWER PIPE-24 IN | 1,424.00 | LF | | \$ | |
| 1320 | 00528 | | STORM SEWER PIPE-36 IN | 239.00 | LF | | \$ | |
| 1330 | 01202 | | PIPE CULVERT HEADWALL-15 IN | 4.00 | EACH | | \$ | |
| 1340 | 01204 | | PIPE CULVERT HEADWALL-18 IN | 9.00 | EACH | | \$ | |
| 1350 | 01208 | | PIPE CULVERT HEADWALL-24 IN | 5.00 | EACH | | \$ | |
| 1360 | 01210 | | PIPE CULVERT HEADWALL-30 IN | 1.00 | EACH | | \$ | |
| 1370 | 01212 | | PIPE CULVERT HEADWALL-36 IN | 1.00 | EACH | | \$ | |
| 1380 | 01216 | | PIPE CULVERT HEADWALL-48 IN | 2.00 | EACH | | \$ | |
| 1390 | 01220 | | PIPE CULVERT HEADWALL-60 IN | 1.00 | EACH | | \$ | |
| 1400 | 01456 | | CURB BOX INLET TYPE A | 79.00 | EACH | | \$ | |
| 1410 | 01480 | | CURB BOX INLET TYPE B | 1.00 | EACH | | \$ | |
| 1420 | 01544 | | DROP BOX INLET TYPE 11 | 5.00 | EACH | | \$ | |
| 1430 | 01559 | | DROP BOX INLET TYPE 13G | 7.00 | EACH | | \$ | |
| 1440 | 01581 | | DROP BOX INLET TYPE 16G | 1.00 | EACH | | \$ | |
| 1450 | 02484 | | CHANNEL LINING CLASS III | 410.00 | TON | | \$ | |
| 1460 | 02600 | | FABRIC GEOTEXTILE TY IV FOR PIPE | 52,525.00 | SQYD | \$2.00 | \$ | \$105,050.00 |
| 1470 | 22766ED | | TRENCH DRAIN | 16.00 | LF | | \$ | |
| 1480 | 23609ED | | HYDRAULIC CONTROL STRUCTURE (STA 101+56.57) (REVISED: 7-23-18) | 1.00 | LS | | \$ | |
| 1481 | 23609ED | | HYDRAULIC CONTROL STRUCTURE (STA 194+55.35) (ADDED: 7-23-18) | 1.00 | LS | | \$ | |
| 1490 | 23952EC | | DRAINAGE JUNCTION BOX TY B | 5.00 | EACH | | \$ | |
| 1500 | 24814EC | | PIPELINE INSPECTION | 7,376.00 | LF | | \$ | |

Section: 0005 - BRIDGE-27648

| LINE | BID CODE | ALT | DESCRIPTION | QUANTITY | UNIT | UNIT PRIC | FP | AMOUNT |
|------|----------|-----|-----------------------------|----------|------|-----------|----|--------|
| 1510 | 02231 | | STRUCTURE GRANULAR BACKFILL | 1,056.20 | CUYD | | \$ | |
| 1520 | 02998 | | MASONRY COATING | 1,054.00 | SQYD | | \$ | |
| 1530 | 08001 | | STRUCTURE EXCAVATION-COMMON | 4,926.00 | CUYD | | \$ | |
| 1540 | 08002 | | STRUCTURE EXCAV-SOLID ROCK | 145.00 | CUYD | | \$ | |

PROPOSAL BID ITEMS

REVISED ADDENDUM #3: 7-25-18

181025

Page 5 of 7

Report Date 7/25/18

| LINE | BID CODE | ALT | DESCRIPTION | QUANTITY | UNIT | UNIT PRIC | FP | AMOUNT |
|------|----------|-----|----------------------------------|------------|------|-----------|----|--------|
| 1550 | 08019 | | CYCLOPEAN STONE RIP RAP | 3,698.00 | TON | | \$ | |
| 1560 | 08033 | | TEST PILES | 78.00 | LF | | \$ | |
| 1570 | 08046 | | PILES-STEEL HP12X53 | 972.00 | LF | | \$ | |
| 1580 | 08094 | | PILE POINTS-12 IN | 32.00 | EACH | | \$ | |
| 1590 | 08100 | | CONCRETE-CLASS A | 603.30 | CUYD | | \$ | |
| 1600 | 08104 | | CONCRETE-CLASS AA | 1,009.30 | CUYD | | \$ | |
| 1610 | 08135 | | MECHANICAL REINF COUPLER #10 | 43.00 | EACH | | \$ | |
| 1620 | 08150 | | STEEL REINFORCEMENT | 67,877.00 | LB | | \$ | |
| 1630 | 08151 | | STEEL REINFORCEMENT-EPOXY COATED | 249,355.00 | LB | | \$ | |
| 1640 | 08634 | | PRECAST PC I BEAM TYPE 4 | 1,612.30 | LF | | \$ | |
| 1650 | 23630EC | | ARMORED EDGE FOR CONCRETE | 1.00 | LS | | \$ | |
| 1660 | 23813EC | | DECK DRAIN | 24.00 | EACH | | \$ | |

Section: 0006 - BRIDGE-CULVERT 27646

| LINE | BID CODE | ALT | DESCRIPTION | QUANTITY | UNIT | UNIT PRIC | FP | AMOUNT |
|------|----------|-----|----------------------------|-----------|------|-----------|----|--------|
| 1670 | 08002 | | STRUCTURE EXCAV-SOLID ROCK | 13.00 | CUYD | | \$ | |
| 1680 | 08003 | | FOUNDATION PREPARATION | 1.00 | LS | | \$ | |
| 1690 | 08100 | | CONCRETE-CLASS A | 511.20 | CUYD | | \$ | |
| 1700 | 08150 | | STEEL REINFORCEMENT | 69,192.00 | LB | | \$ | |

Section: 0007 - BRIDGE-RETAINING WALL 27647

| LINE | BID CODE | ALT | DESCRIPTION | QUANTITY | UNIT | UNIT PRIC | FP | AMOUNT |
|------|----------|-----|-----------------------------|----------|------|-----------|----|--------|
| 1710 | 08001 | | STRUCTURE EXCAVATION-COMMON | 37.00 | CUYD | | \$ | |
| 1720 | 08002 | | STRUCTURE EXCAV-SOLID ROCK | 51.00 | CUYD | | \$ | |
| 1730 | 08039 | | PRE-DRILLING FOR PILES | 60.00 | LF | | \$ | |
| 1740 | 08051 | | PILES-STEEL HP14X89 | 165.00 | LF | | \$ | |
| 1750 | 08100 | | CONCRETE-CLASS A | 17.10 | CUYD | | \$ | |
| 1760 | 08150 | | STEEL REINFORCEMENT | 2,354.00 | LB | | \$ | |
| 1770 | 21119ED | | CONCRETE FORM LINER | 42.00 | SQYD | | \$ | |

Section: 0008 - SIGNING

| LINE | BID CODE | ALT | DESCRIPTION | QUANTITY | UNIT | UNIT PRIC | FP | AMOUNT |
|------|----------|-----|--|----------|------|-----------|----|--------|
| 1780 | 06406 | | SBM ALUM SHEET SIGNS .080 IN | 350.00 | SQFT | | \$ | |
| 1790 | 06407 | | SBM ALUM SHEET SIGNS .125 IN | 80.00 | SQFT | | \$ | |
| 1800 | 06410 | | STEEL POST TYPE 1 | 300.00 | LF | | \$ | |
| 1810 | 06411 | | STEEL POST TYPE 2 | 900.00 | LF | | \$ | |
| 1820 | 06490 | | CLASS A CONCRETE FOR SIGNS (REVISED: 7-25-18) | .65 | CUYD | | \$ | |
| 1830 | 21373ND | | REMOVE SIGN | 5.00 | EACH | | \$ | |
| 1840 | 21596ND | | GMSS TYPE D | 10.00 | EACH | | \$ | |
| 1850 | 24631EC | | BARCODE SIGN INVENTORY | 81.00 | EACH | | \$ | |

PROPOSAL BID ITEMS

181025

Page 6 of 7

Report Date 7/25/18

Section: 0009 - SIGNALIZATION

| LINE | BID CODE | ALT | DESCRIPTION | QUANTITY | UNIT | UNIT PRIC | FP | AMOUNT |
|------|------------|-----|--------------------------------|----------|------|-----------|----|--------|
| 1860 | 04795 | | CONDUIT-2 IN | 1,100.00 | LF | | \$ | |
| 1870 | 04811 | | ELECTRICAL JUNCTION BOX TYPE B | 6.00 | EACH | | \$ | |
| 1880 | 04820 | | TRENCHING AND BACKFILLING | 1,100.00 | LF | | \$ | |
| 1890 | 04830 | | LOOP WIRE | 4,000.00 | LF | | \$ | |
| 1900 | 04844 | | CABLE-NO. 14/5C | 2,200.00 | LF | | \$ | |
| 1910 | 04850 | | CABLE-NO. 14/1 PAIR | 4,000.00 | LF | | \$ | |
| 1920 | 04885 | | MESSENGER-10800 LB | 450.00 | LF | | \$ | |
| 1930 | 04895 | | LOOP SAW SLOT AND FILL | 1,100.00 | LF | | \$ | |
| 1940 | 04931 | | INSTALL CONTROLLER TYPE 170 | 1.00 | EACH | | \$ | |
| 1950 | 04932 | | INSTALL STEEL STRAIN POLE | 4.00 | EACH | | \$ | |
| 1960 | 20093NS835 | | INSTALL PEDESTRIAN HEAD-LED | 8.00 | EACH | | \$ | |
| 1970 | 20188NS835 | | INSTALL LED SIGNAL-3 SECTION | 8.00 | EACH | | \$ | |
| 1980 | 20456NS835 | | INSTALL TEMP VIDEO CAMERA | 5.00 | EACH | | \$ | |
| 1990 | 21743NN | | INSTALL PEDESTRIAN DETECTOR | 8.00 | EACH | | \$ | |
| 2000 | 23157EN | | TRAFFIC SIGNAL POLE BASE | 18.00 | CUYD | | \$ | |
| 2010 | 24955ED | | REMOVE SIGNAL EQUIPMENT | 1.00 | EACH | | \$ | |

Section: 0010 - LIGHTING

| LINE | BID CODE | ALT | DESCRIPTION | QUANTITY | UNIT | UNIT PRIC | FP | AMOUNT |
|------|------------|-----|--------------------------------|-----------|------|-----------|----|--------|
| 2020 | 04701 | | POLE 40 FT MTG HT | 18.00 | EACH | | \$ | |
| 2030 | 04722 | | BRACKET 8 FT | 3.00 | EACH | | \$ | |
| 2040 | 04725 | | BRACKET 15 FT | 15.00 | EACH | | \$ | |
| 2050 | 04740 | | POLE BASE | 18.00 | EACH | | \$ | |
| 2060 | 04750 | | TRANSFORMER BASE | 18.00 | EACH | | \$ | |
| 2070 | 04761 | | LIGHTING CONTROL EQUIPMENT | 1.00 | EACH | | \$ | |
| 2080 | 04780 | | FUSED CONNECTOR KIT | 18.00 | EACH | | \$ | |
| 2090 | 04793 | | CONDUIT-1 1/4 IN | 3,600.00 | LF | | \$ | |
| 2100 | 04795 | | CONDUIT-2 IN | 375.00 | LF | | \$ | |
| 2110 | 04820 | | TRENCHING AND BACKFILLING | 4,000.00 | LF | | \$ | |
| 2120 | 04832 | | WIRE-NO. 12 | 1,836.00 | LF | | \$ | |
| 2130 | 04833 | | WIRE-NO. 8 | 10,800.00 | LF | | \$ | |
| 2140 | 20391NS835 | | ELECTRICAL JUNCTION BOX TYPE A | 4.00 | EACH | | \$ | |
| 2150 | 24589ED | | LED LUMINAIRE | 18.00 | EACH | | \$ | |

Section: 0011 - WATERLINE-BOONE COUNTY WATER DISTRICT

| LINE | BID CODE | ALT | DESCRIPTION | QUANTITY | UNIT | UNIT PRIC | FP | AMOUNT |
|------|----------|-----|---------------------------------|----------|------|-----------|----|--------|
| 2160 | 14004 | | W DIRECTIONAL BORE | 200.00 | LF | | \$ | |
| 2170 | 14009 | | W ENCASMENT STEEL BORED RANGE 4 | 77.00 | LF | | \$ | |
| 2180 | 14011 | | W ENCASMENT STEEL BORED RANGE 6 | 64.00 | LF | | \$ | |
| 2190 | 14018 | | W FIRE HYDRANT ADJUST | 3.00 | EACH | | \$ | |
| 2200 | 14019 | | W FIRE HYDRANT ASSEMBLY | 11.00 | EACH | | \$ | |
| 2210 | 14020 | | W FIRE HYDRANT RELOCATE | 15.00 | EACH | | \$ | |
| 2220 | 14029 | | W METER ADJUST | 3.00 | EACH | | \$ | |
| 2230 | 14030 | | W METER RELOCATE | 28.00 | EACH | | \$ | |

PROPOSAL BID ITEMS

181025

Page 7 of 7

Report Date 7/25/18

| LINE | BID CODE | ALT | DESCRIPTION | QUANTITY | UNIT | UNIT PRIC | FP | AMOUNT |
|------|----------|-----|-------------------------------------|----------|------|-----------|----|--------|
| 2240 | 14037 | | W PIPE DUCTILE IRON 08 INCH | 1,044.00 | LF | | \$ | |
| 2250 | 14039 | | W PIPE DUCTILE IRON 12 INCH | 130.00 | LF | | \$ | |
| 2260 | 14040 | | W PIPE DUCTILE IRON 16 INCH | 9,088.00 | LF | | \$ | |
| 2270 | 14048 | | W PIPE DCTL IRON RSTRND JOINT 08 IN | 93.00 | LF | | \$ | |
| 2280 | 14050 | | W PIPE DCTL IRON RSTRND JOINT 12 IN | 100.00 | LF | | \$ | |
| 2290 | 14051 | | W PIPE DCTL IRON RSTRND JOINT 16 IN | 281.00 | LF | | \$ | |
| 2300 | 14074 | | W PLUG EXISTING MAIN | 2.00 | EACH | | \$ | |
| 2310 | 14090 | | W TAPPING SLEEVE AND VALVE SIZE 2 | 1.00 | EACH | | \$ | |
| 2320 | 14095 | | W TIE-IN 08 INCH | 5.00 | EACH | | \$ | |
| 2330 | 14097 | | W TIE-IN 12 INCH | 2.00 | EACH | | \$ | |
| 2340 | 14098 | | W TIE-IN 16 INCH | 3.00 | EACH | | \$ | |
| 2350 | 14106 | | W VALVE 08 INCH | 6.00 | EACH | | \$ | |
| 2360 | 14108 | | W VALVE 12 INCH | 3.00 | EACH | | \$ | |
| 2370 | 14109 | | W VALVE 16 INCH | 14.00 | EACH | | \$ | |
| 2380 | 14113 | | W VALVE BOX ADJUST | 11.00 | EACH | | \$ | |
| 2390 | 14118 | | W VALVE CUT-IN 08 INCH | 4.00 | EACH | | \$ | |
| 2400 | 14121 | | W VALVE CUT-IN 16 INCH | 2.00 | EACH | | \$ | |
| 2410 | 14145 | | W SERV COPPER LONG SIDE 1 IN | 1.00 | EACH | | \$ | |
| 2420 | 14147 | | W SERV COPPER LONG SIDE 2 IN | 1.00 | EACH | | \$ | |
| 2430 | 14148 | | W SERV COPPER LONG SIDE 3/4 IN | 15.00 | EACH | | \$ | |
| 2440 | 14152 | | W SERV COPPER SHORT SIDE 3/4 IN | 20.00 | EACH | | \$ | |

Section: 0012 - WATERLINE-CITY OF FLORENCE

| LINE | BID CODE | ALT | DESCRIPTION | QUANTITY | UNIT | UNIT PRIC | FP | AMOUNT |
|------|----------|-----|------------------------------|----------|------|-----------|----|--------|
| 2450 | 14001 | | W AIR RELEASE VALVE 3/4 INCH | 1.00 | EACH | | \$ | |
| 2460 | 14019 | | W FIRE HYDRANT ASSEMBLY | 1.00 | EACH | | \$ | |
| 2470 | 14037 | | W PIPE DUCTILE IRON 08 INCH | 250.00 | LF | | \$ | |
| 2480 | 14095 | | W TIE-IN 08 INCH | 2.00 | EACH | | \$ | |
| 2490 | 14113 | | W VALVE BOX ADJUST | 7.00 | EACH | | \$ | |

Section: 0013 - DEMOBILIZATION &/OR MOBILIZATION

| LINE | BID CODE | ALT | DESCRIPTION | QUANTITY | UNIT | UNIT PRIC | FP | AMOUNT |
|------|----------|-----|----------------|----------|------|-----------|----|--------|
| 2500 | 02568 | | MOBILIZATION | 1.00 | LS | | \$ | |
| 2510 | 02569 | | DEMOBILIZATION | 1.00 | LS | | \$ | |

GENERAL SUMMARY

NOTES:

- Ⓐ SEE GENERAL NOTES SHEET R2m
- Ⓑ FOR UTILITY ABANDONMENT

| ITEM | DESCRIPTION | UNIT | KY 237 | THUNDER RIDGE DRIVE | CARTERS MILL / OAKBROOK | CAMP ERNST ROAD | BLUE STEM EXTENSION | MOT | PROJECT TOTALS |
|------------|---|------|--------|---------------------|-------------------------|-----------------|---------------------|-------|----------------|
| 6510 | PAVE STRIPING-TEMP PAINT-4 IN | LF | 99,660 | 0 | 0 | 1,800 | 0 | | 101,460 |
| 6514 | PAVE STRIPING-PERM PAINT-4 IN | LF | 78,933 | 0 | 557 | 2,540 | 747 | | 82,777 |
| 6516 | PAVE STRIPING-PERM PAINT-8 IN | LF | 3,067 | 0 | 0 | 201 | 0 | | 3,268 |
| 23791EC | PAVE STRIPING-CHEVRON MARKINGS | SOFT | 1,298 | 0 | 0 | 0 | 0 | | 1,298 |
| 6565 | PAVE MARKING-THERMO X-WALK-6 INCH | LF | 1,248 | 95 | 226 | 83 | 70 | | 1,722 |
| 6568 | PAVE MARKING-THERMO STOP BAR-24IN | LF | 392 | 12 | 40 | 89 | 11 | | 544 |
| 6570 | PAVE MARKING-THERMO CROSS-HATCH | SOFT | 2,291 | 0 | 0 | 681 | 0 | | 2,972 |
| 6572 | PAVE MARKING-DOTTED LANE EXTEN | LF | 440 | 0 | 0 | 0 | 0 | | 440 |
| 6573 | PAVE MARKING-THERMO STR ARROW | EACH | 1 | 0 | 0 | 0 | 0 | | 1 |
| 6574 | PAVE MARKING-THERMO CURV ARROW | EACH | 45 | 0 | 0 | 0 | 0 | | 45 |
| 6575 | PAVE MARKING-THERMO COMB ARROW | EACH | 7 | 0 | 0 | 0 | 0 | | 7 |
| 6589 | PAVEMENT MARKER TYPE V-MW | EACH | 431 | 0 | 0 | 0 | 0 | | 431 |
| 6591 | PAVEMENT MARKER TYPE V-BY | EACH | 783 | 0 | 0 | 0 | 0 | | 783 |
| 24845EC | UTILITY COORDINATION | LS | | | | | | | 1 |
| 2720 | SIDEWALK-4 INCH CONCRETE | SOYD | 877 | 90 | 166 | 21 | 250 | | 1,404 |
| 23158ES505 | DETECTABLE WARNINGS (YELLOW) | SOFT | 754 | 21 | 41 | 40 | 83 | | 939 |
| 2720 | SPECIAL SIDEWALK @ ROUNDABOUT SPLITTER ISLANDS) | SOYD | 440 | 0 | 0 | 86 | 0 | | 526 |
| 2690 | SAFELOADING | CY | 60 | | | | | | 60 |
| 15094 | S MANHOLE ADJUST TO GRADE | EACH | 7 | | | | | | 7 |
| 15092 | S MANHOLE | EACH | 1 | | | | | | 1 |
| 2562 | TEMPORARY SIGNS | SOFT | | | | | | 1,013 | 1,013 |
| 6410 | STEEL POST TYPE 1 | LF | | | | | | 1,137 | 1,137 |
| 8901 | CRASH CUSHION TY V1 CLASS BT TL2 | EACH | | | | | | 8 | 8 |
| 3171 | CONCRETE BARRIER WALL TYPE 9T | LF | | | | | | 2,849 | 1,944 |
| 2651 | DIVERSIONS (BY-PASS DETOURS) | LS | | | | | | 1 | 1 |
| 2731 | REMOVE STRUCTURE - EX. TRIPLE 14'X7' RCBC @ STA. 183+00 | LS | 1 | | | | | | 1 |
| 2731 | REMOVE STRUCTURE - EX. 14'X6' RCBC @ STA. 136+42 | LS | 1 | | | | | | 1 |

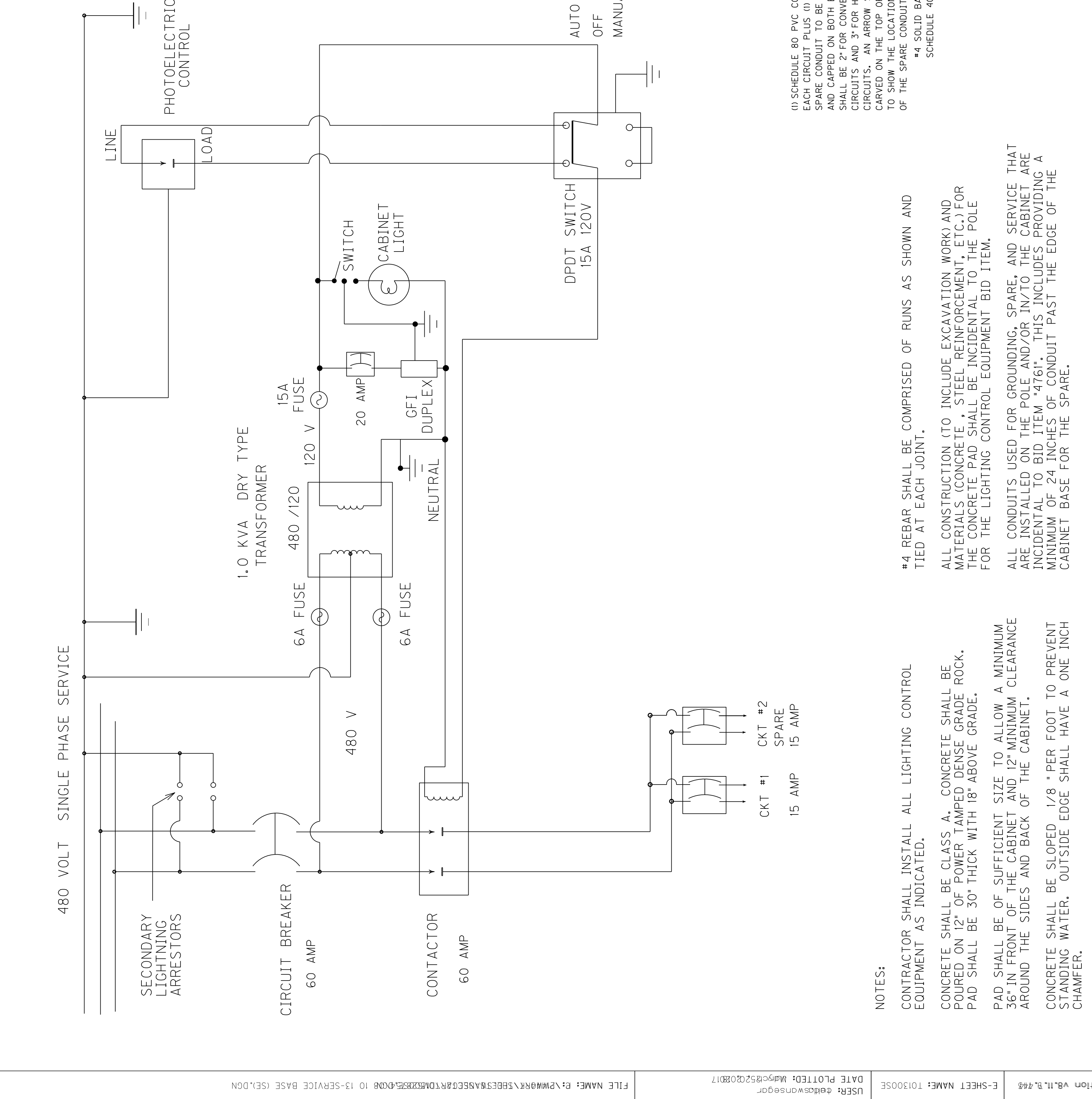
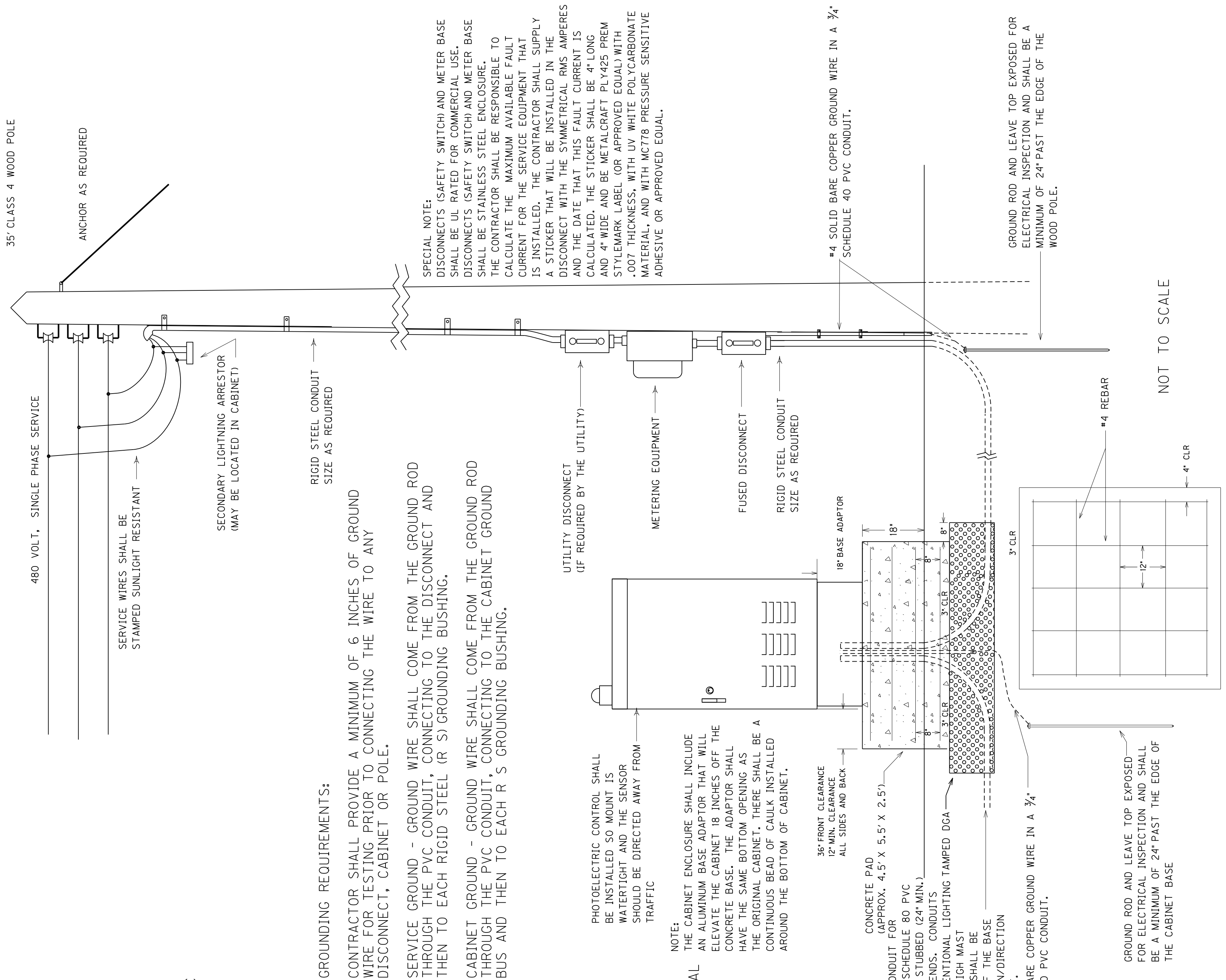
GENERAL SUMMARY

REVISED 7-25-18

NOTES:

- ⑱ SEE GENERAL NOTES SHEET R2m
- ⑲ FOR UTILITY ABANDONMENT

| ITEM | DESCRIPTION | UNIT | KY 237 | THUNDER RIDGE DRIVE | CARTERS MILL / OAKBROOK | CAMP ERNST ROAD | BLUE STEM EXTENSION | MOT | PROJECT TOTALS |
|------------|---|------|--------|---------------------|-------------------------|-----------------|---------------------|-------|----------------|
| 6510 | PAVE STRIPING-TEMP PAINT-4 IN | LF | 99,660 | 0 | 0 | 1,800 | 0 | | 101,460 |
| 6514 | PAVE STRIPING-PERM PAINT-4 IN | LF | 78,933 | 0 | 557 | 2,540 | 747 | | 82,777 |
| 6516 | PAVE STRIPING-PERM PAINT-8 IN | LF | 3,067 | 0 | 0 | 201 | 0 | | 3,268 |
| 2379IEC | PAVE STRIPING-CHEVRON MARKINGS | SOFT | 1,298 | 0 | 0 | 0 | 0 | | 1,298 |
| 6565 | PAVE MARKING-THERMO X-WALK-6 INCH | LF | 1,248 | 95 | 226 | 83 | 70 | | 1,722 |
| 6568 | PAVE MARKING-THERMO STOP BAR-24IN | LF | 392 | 12 | 40 | 89 | 11 | | 544 |
| 6570 | PAVE MARKING-THERMO CROSS-HATCH | SOFT | 2,291 | 0 | 0 | 681 | 0 | | 2,972 |
| 6572 | PAVE MARKING-DOTTED LANE EXTEN | LF | 440 | 0 | 0 | 0 | 0 | | 440 |
| 6573 | PAVE MARKING-THERMO STR ARROW | EACH | 1 | 0 | 0 | 0 | 0 | | 1 |
| 6574 | PAVE MARKING-THERMO CURV ARROW | EACH | 45 | 0 | 0 | 0 | 0 | | 45 |
| 6575 | PAVE MARKING-THERMO COMB ARROW | EACH | 7 | 0 | 0 | 0 | 0 | | 7 |
| 6589 | PAVEMENT MARKER TYPE V-MW | EACH | 431 | 0 | 0 | 0 | 0 | | 431 |
| 6591 | PAVEMENT MARKER TYPE V-BY | EACH | 783 | 0 | 0 | 0 | 0 | | 783 |
| 24845EC | UTILITY COORDINATION | LS | | | | | | | 1 |
| 2720 | SIDEWALK-4 INCH CONCRETE | SOYD | 877 | 90 | 166 | 21 | 250 | | 1,404 |
| 23158ES505 | DETECTABLE WARNINGS (YELLOW) | SOFT | 754 | 21 | 41 | 40 | 83 | | 939 |
| 2720 | SPECIAL SIDEWALK @ ROUNDABOUT SPLITTER ISLANDS) | SOYD | 440 | 0 | 0 | 86 | 0 | | 526 |
| 2690 | SAFELOADING | CY | 60 | | | | | | 60 |
| 15094 | S MANHOLE ADJUST TO GRADE | EACH | 7 | | | | | | 7 |
| 15092 | S MANHOLE | EACH | 1 | | | | | | 1 |
| 2562 | TEMPORARY SIGNS | SOFT | | | | | | 1,013 | 1,013 |
| 6410 | STEEL POST TYPE | LF | | | | | | 1,137 | 1,137 |
| 8901 | CRASH CUSHION TY VI CLASS BT TL2 | EACH | | | | | | 8 | 8 |
| 3171 | CONCRETE BARRIER WALL TYPE 9T | LF | | | | | | 2,849 | 1,944 |
| 2651 | DIVERSIONS (BY-PASS DETOURS) | LS | 1 | | | | | 1 | 1 |
| 2731 | REMOVE STRUCTURE - EX. TRIPLE 14'X7' RCBC @ STA. 183+00 | LS | 1 | | | | | | 1 |
| 2731 | REMOVE STRUCTURE - EX. 14'X6' RCBC @ STA. 136+42 | LS | 1 | | | | | | 1 |



GROUNDING REQUIREMENTS:
 CONTRACTOR SHALL PROVIDE A MINIMUM OF 6 INCHES OF GROUND WIRE FOR TESTING PRIOR TO CONNECTING THE WIRE TO ANY DISCONNECT, CABINET OR POLE.
 SERVICE GROUND - GROUND WIRE SHALL COME FROM THE GROUND ROD THROUGH THE PVC CONDUIT, CONNECTING TO THE DISCONNECT AND THEN TO EACH RIGID STEEL (R/S) GROUNDING BUSHING.
 CABINET GROUND - GROUND WIRE SHALL COME FROM THE GROUND ROD THROUGH THE PVC CONDUIT, CONNECTING TO THE CABINET GROUND BUS AND THEN TO EACH R/S GROUNDING BUSHING.

NOTE:
 PHOTOELECTRIC CONTROL SHALL BE INSTALLED SO MOUNT IS WATERTIGHT AND THE SENSOR SHOULD BE DIRECTED AWAY FROM TRAFFIC
 THE CABINET ENCLOSURE SHALL INCLUDE AN ALUMINUM BASE ADAPTOR THAT WILL ELEVATE THE CABINET 18 INCHES OFF THE CONCRETE BASE. THE ADAPTOR SHALL HAVE THE SAME BOTTOM OPENING AS THE ORIGINAL CABINET. THERE SHALL BE A CONTINUOUS BEAD OF CAULK INSTALLED AROUND THE BOTTOM OF CABINET.

CONCRETE PAD
 (APPROX. 4.5' X 5.5' X 2.5')
 (1) SCHEDULE 80 PVC CONDUIT FOR EACH CIRCUIT PLUS (1) SCHEDULE 80 PVC SPARE CONDUIT TO BE STUBBED (24" MIN.) AND CAPPED ON BOTH ENDS. CONDUITS SHALL BE 2" FOR CONVENTIONAL LIGHTING TAMPED DGA CIRCUITS AND 3" FOR HIGH MAST CIRCUITS. AN ARROW SHALL BE CARVED ON THE TOP OF THE BASE TO SHOW THE LOCATION/DIRECTION OF THE SPARE CONDUIT.
 #4 SOLID BARE COPPER GROUND WIRE IN A 3/4" SCHEDULE 40 PVC CONDUIT.

GROUND ROD AND LEAVE TOP EXPOSED FOR ELECTRICAL INSPECTION AND SHALL BE A MINIMUM OF 24" PAST THE EDGE OF THE WOOD POLE.

TYPICAL

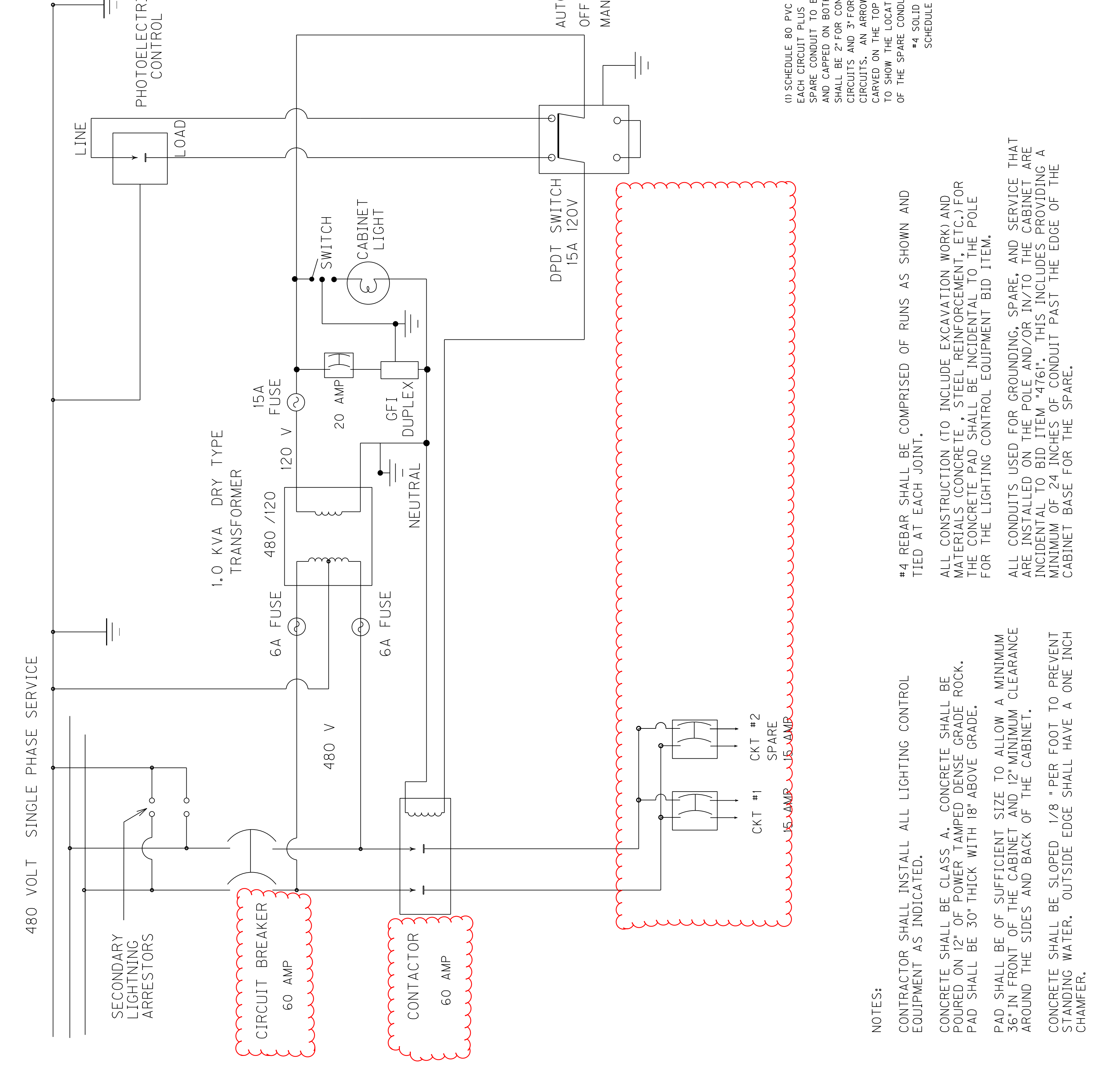
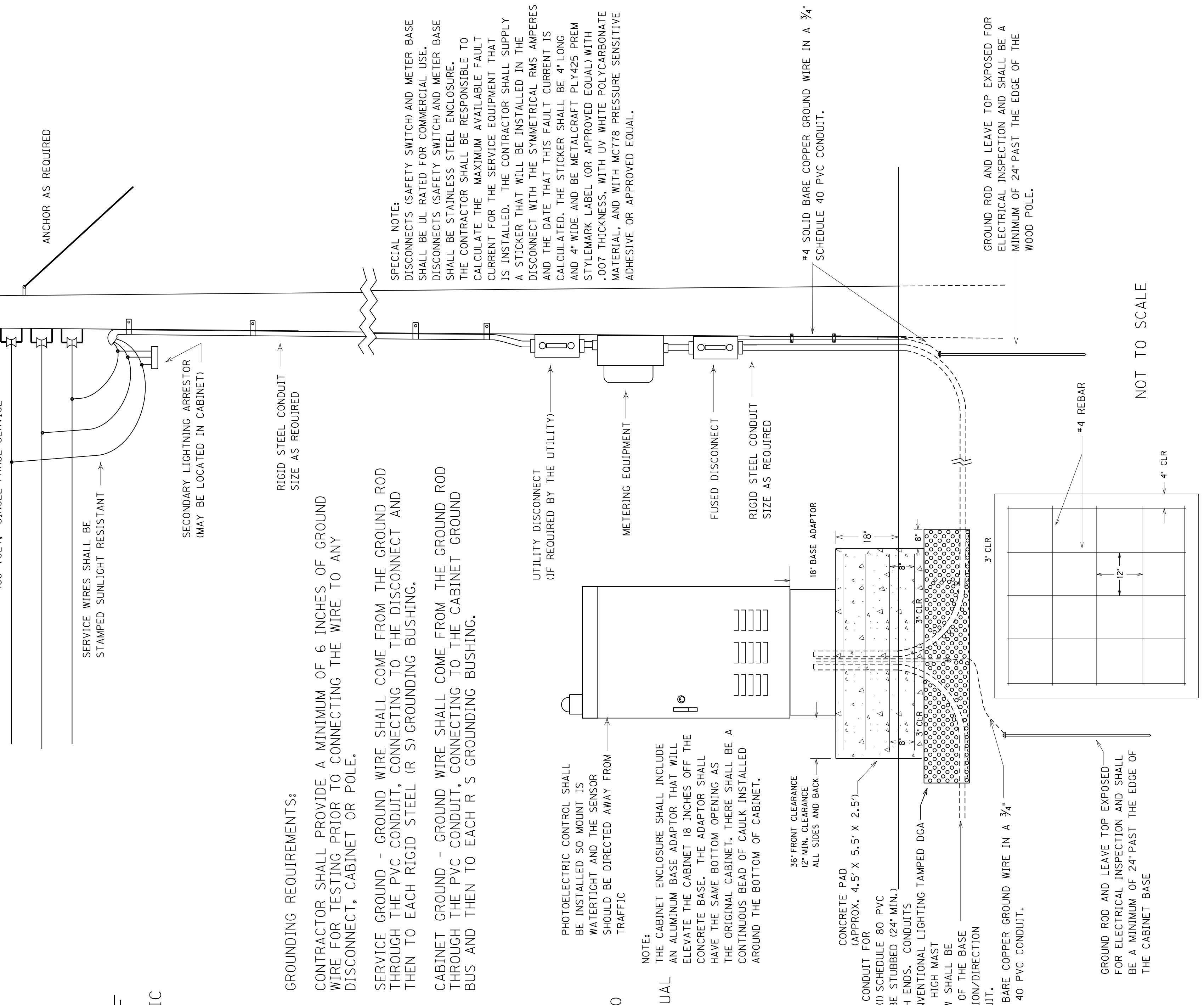
NOT TO SCALE

NOTES:
 CONTRACTOR SHALL INSTALL ALL LIGHTING CONTROL EQUIPMENT AS INDICATED.
 CONCRETE SHALL BE CLASS A. CONCRETE SHALL BE POURED ON 12" OF POWER TAMPED DENSE GRADE ROCK. PAD SHALL BE 30" THICK WITH 18" ABOVE GRADE.
 PAD SHALL BE OF SUFFICIENT SIZE TO ALLOW A MINIMUM 36" IN FRONT OF THE CABINET AND 12" MINIMUM CLEARANCE AROUND THE SIDES AND BACK OF THE CABINET.
 CONCRETE SHALL BE SLOPED 1/8" PER FOOT TO PREVENT STANDING WATER. OUTSIDE EDGE SHALL HAVE A ONE INCH CHAMFER.

#4 REBAR SHALL BE COMPRISED OF RUNS AS SHOWN AND TIED AT EACH JOINT.
 ALL CONSTRUCTION (TO INCLUDE EXCAVATION WORK) AND MATERIALS (CONCRETE, STEEL REINFORCEMENT, ETC.) FOR THE CONCRETE PAD SHALL BE INCIDENTAL TO THE POLE FOR THE LIGHTING CONTROL EQUIPMENT BID ITEM.
 ALL CONDUITS USED FOR GROUNDING, SPARE, AND SERVICE THAT ARE INSTALLED ON THE POLE AND/OR IN/TO THE CABINET ARE INCIDENTAL TO BID ITEM "4761". THIS INCLUDES PROVIDING A MINIMUM OF 24 INCHES OF CONDUIT PAST THE EDGE OF THE CABINET BASE FOR THE SPARE.

REVISED 7-25-18

35' CLASS 4 WOOD POLE



GROUNDING REQUIREMENTS:

CONTRACTOR SHALL PROVIDE A MINIMUM OF 6 INCHES OF GROUND WIRE FOR TESTING PRIOR TO CONNECTING THE WIRE TO ANY DISCONNECT, CABINET OR POLE.

SERVICE GROUND - GROUND WIRE SHALL COME FROM THE GROUND ROD THROUGH THE PVC CONDUIT, CONNECTING TO THE DISCONNECT AND THEN TO EACH RIGID STEEL (R/S) GROUNDING BUSHING.

CABINET GROUND - GROUND WIRE SHALL COME FROM THE GROUND ROD THROUGH THE PVC CONDUIT, CONNECTING TO THE CABINET GROUND BUS AND THEN TO EACH R/S GROUNDING BUSHING.

SPECIAL NOTE:
DISCONNECTS (SAFETY SWITCH AND METER BASE SHALL BE UL RATED FOR COMMERCIAL USE.
DISCONNECTS (SAFETY SWITCH AND METER BASE SHALL BE STAINLESS STEEL ENCLOSURE.
THE CONTRACTOR SHALL BE RESPONSIBLE TO CALCULATE THE MAXIMUM AVAILABLE FAULT CURRENT FOR THE SERVICE EQUIPMENT THAT IS INSTALLED. THE CONTRACTOR SHALL SUPPLY A STICKER THAT WILL BE INSTALLED IN THE DISCONNECT WITH THE SYMMETRICAL RMS AMPERES AND THE DATE THAT THIS FAULT CURRENT IS CALCULATED. THE STICKER SHALL BE 4" LONG AND 4" WIDE AND BE METALCRAFT PL1425 PREM STYLE MARK LABEL (OR APPROVED EQUAL) WITH .007" THICKNESS, WITH UV WHITE POLYCARBONATE MATERIAL, AND WITH MC778 PRESSURE SENSITIVE ADHESIVE OR APPROVED EQUAL.

PHOTOELECTRIC CONTROL SHALL BE INSTALLED SO MOUNT IS WATERTIGHT AND THE SENSOR SHOULD BE DIRECTED AWAY FROM TRAFFIC

NOTE:
THE CABINET ENCLOSURE SHALL INCLUDE AN ALUMINUM BASE ADAPTOR THAT WILL ELEVATE THE CABINET 18 INCHES OFF THE CONCRETE BASE. THE ADAPTOR SHALL HAVE THE SAME BOTTOM OPENING AS THE ORIGINAL CABINET. THERE SHALL BE A CONTINUOUS BEAD OF CAULK INSTALLED AROUND THE BOTTOM OF CABINET.

NOTES:
CONTRACTOR SHALL INSTALL ALL LIGHTING CONTROL EQUIPMENT AS INDICATED.

CONCRETE SHALL BE CLASS A. CONCRETE SHALL BE POURED ON 12" OF POWER TAMPED DENSE GRADE ROCK. PAD SHALL BE 30" THICK WITH 18" ABOVE GRADE.

PAD SHALL BE OF SUFFICIENT SIZE TO ALLOW A MINIMUM 36" IN FRONT OF THE CABINET AND 12" MINIMUM CLEARANCE AROUND THE SIDES AND BACK OF THE CABINET.

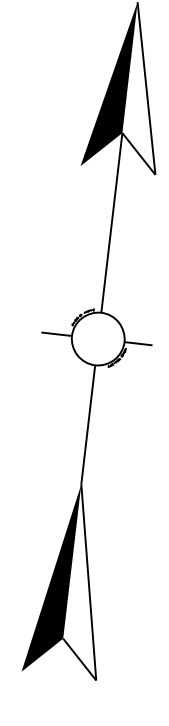
CONCRETE SHALL BE SLOPED 1/8" PER FOOT TO PREVENT STANDING WATER. OUTSIDE EDGE SHALL HAVE A ONE INCH CHAMFER.

#4 REBAR SHALL BE COMPRISED OF RUNS AS SHOWN AND TIED AT EACH JOINT.

ALL CONSTRUCTION (TO INCLUDE EXCAVATION WORK) AND MATERIALS (CONCRETE, STEEL REINFORCEMENT, ETC.) FOR THE CONCRETE PAD SHALL BE INCIDENTAL TO THE POLE FOR THE LIGHTING CONTROL EQUIPMENT BID ITEM.

ALL CONDUITS USED FOR GROUNDING, SPARE, AND SERVICE THAT ARE INSTALLED ON THE POLE AND/OR IN/TO THE CABINET ARE INCIDENTAL TO BID ITEM "4761". THIS INCLUDES PROVIDING A MINIMUM OF 24 INCHES OF CONDUIT PAST THE EDGE OF THE CABINET BASE FOR THE SPARE.

| | | | | | |
|-----------|--------|----------|-----------|-----------|--------|
| COUNTY OF | BOONE | ITEM NO. | 6-8001.21 | SHEET NO. | T14 |
| | 207+00 | | | | 208+00 |



44+00
45+00
46+00
47+00
48+00
49+00

193+00
194+00
195+00
196+00
197+00
198+00
199+00
200+00
201+00
202+00
203+00
204+00
205+00
206+00

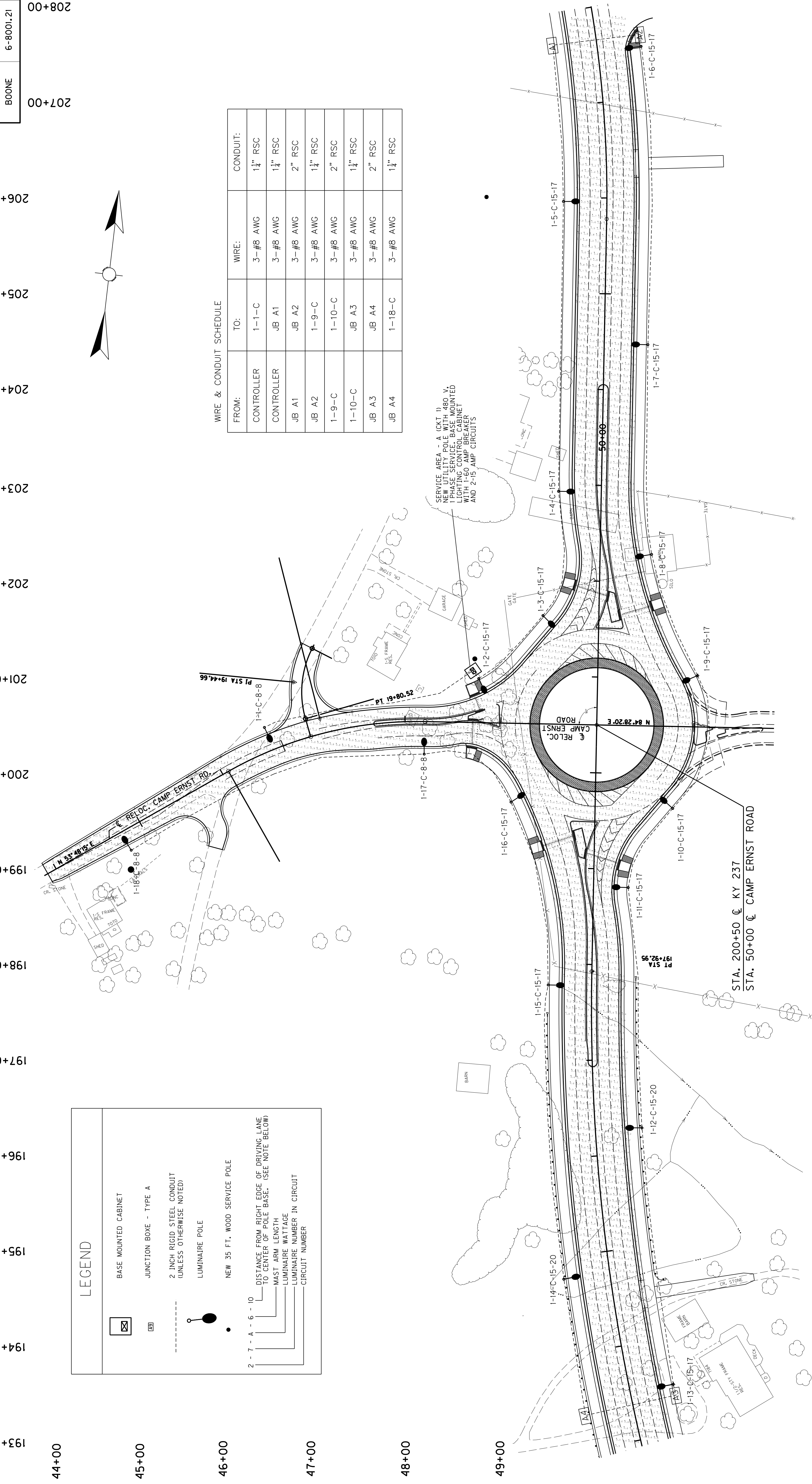
LEGEND

- BASE MOUNTED CABINET
- JUNCTION BOX - TYPE A
- 2 INCH RIGID STEEL CONDUIT (UNLESS OTHERWISE NOTED)
- LUMINAIRE POLE
- NEW 35 FT. WOOD SERVICE POLE
- DISTANCE FROM RIGHT EDGE OF DRIVING LANE TO CENTER OF POLE BASE. (SEE NOTE BELOW)
- MAST ARM LENGTH
- LUMINAIRE WATTAGE
- LUMINAIRE NUMBER IN CIRCUIT
- CIRCUIT NUMBER

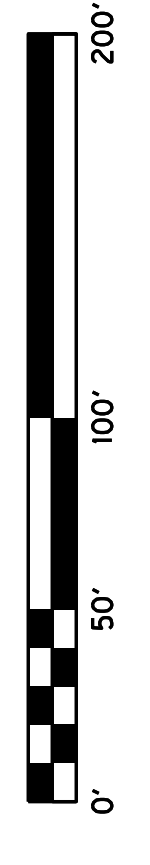
WIRE & CONDUIT SCHEDULE

| FROM: | TO: | WIRE: | CONDUIT: |
|------------|--------|----------|------------|
| CONTROLLER | 1-1-C | 3-#8 AWG | 1 1/2" RSC |
| CONTROLLER | JB A1 | 3-#8 AWG | 1 1/2" RSC |
| JB A1 | JB A2 | 3-#8 AWG | 2" RSC |
| JB A2 | 1-9-C | 3-#8 AWG | 1 1/2" RSC |
| 1-9-C | 1-10-C | 3-#8 AWG | 2" RSC |
| 1-10-C | JB A3 | 3-#8 AWG | 1 1/2" RSC |
| JB A3 | JB A4 | 3-#8 AWG | 2" RSC |
| JB A4 | 1-18-C | 3-#8 AWG | 1 1/2" RSC |

SERVICE AREA - A (CMT 1) SERVICE POLE (14.00 V) 1-PHASE SERVICE - BASE MOUNTED LIGHTING CONTROL CABINET WITH 1-60 AMP BREAKER AND 2-15 AMP CIRCUITS



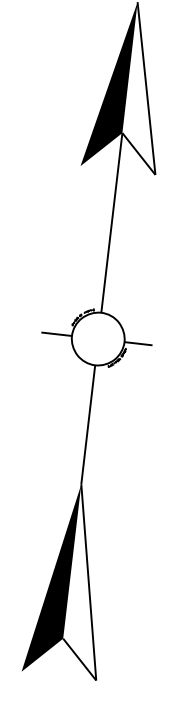
STA. 200+50 @ KY 237
STA. 50+00 @ CAMP ERNST ROAD



LIGHTING PLAN
KY 237 STA. 195+00 TO STA. 206+00
CAMP ERNST RD STA. 45+00 TO 50+00

| | | |
|-----------|-----------|--------|
| COUNTY OF | BOONE | 207+00 |
| ITEM NO. | 6-8001.21 | 208+00 |
| SHEET NO. | T14 | |

REVISED 7-25-18



44+00
45+00
46+00
47+00
48+00
49+00

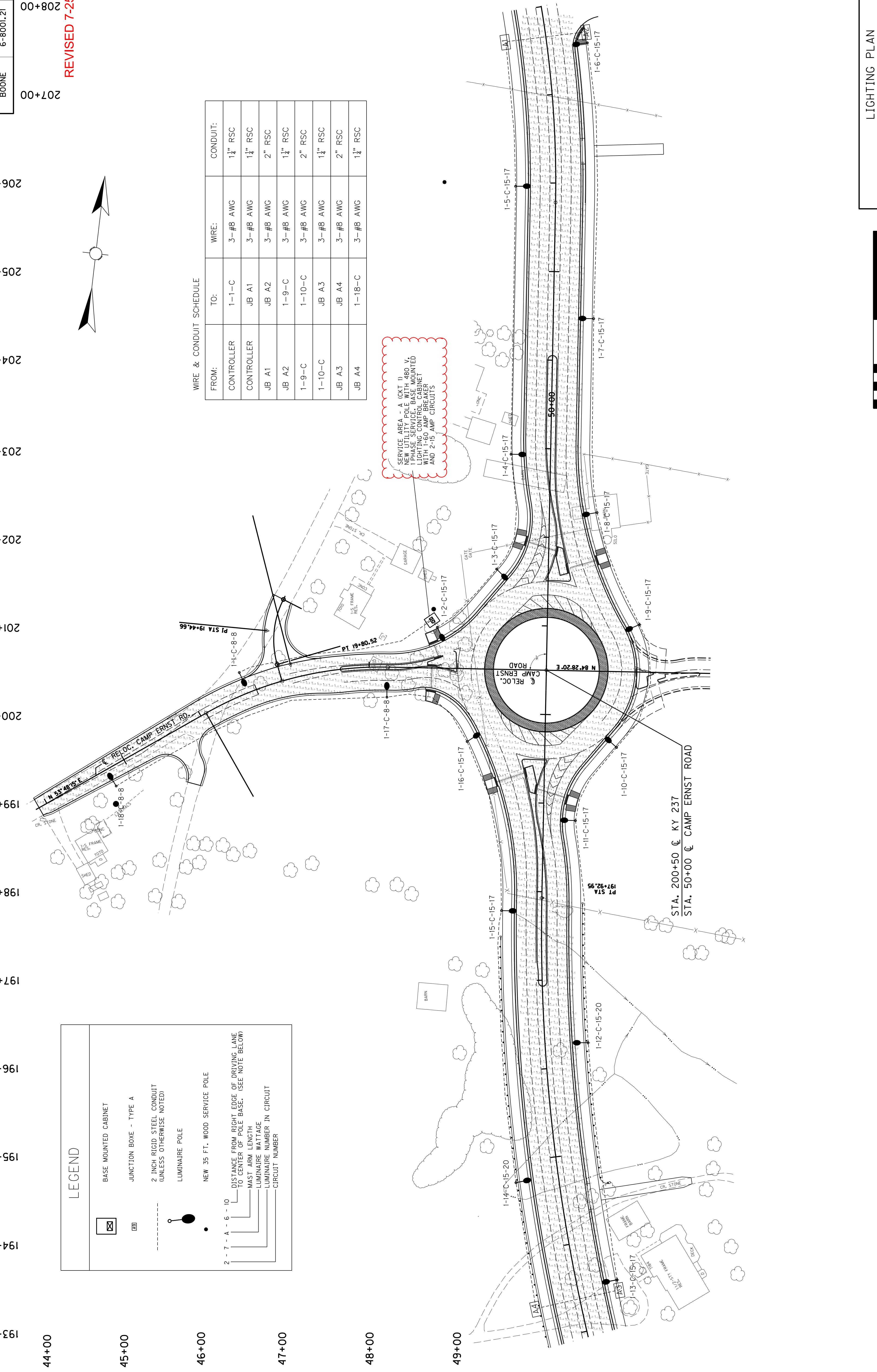
LEGEND

- BASE MOUNTED CABINET
- JUNCTION BOX - TYPE A
- 2 INCH RIGID STEEL CONDUIT (UNLESS OTHERWISE NOTED)
- LUMINAIRE POLE
- NEW 35 FT. WOOD SERVICE POLE
- DISTANCE FROM RIGHT EDGE OF DRIVING LANE TO CENTER OF POLE BASE. (SEE NOTE BELOW)
- MAST ARM LENGTH
- LUMINAIRE WATTAGE
- LUMINAIRE NUMBER IN CIRCUIT
- CIRCUIT NUMBER

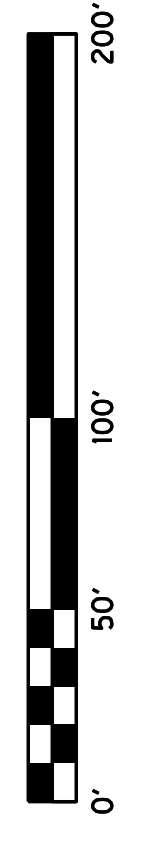
WIRE & CONDUIT SCHEDULE

| FROM: | TO: | WIRE: | CONDUIT: |
|------------|--------|----------|------------|
| CONTROLLER | 1-1-C | 3-#8 AWG | 1 1/2" RSC |
| CONTROLLER | JB A1 | 3-#8 AWG | 1 1/2" RSC |
| JB A1 | JB A2 | 3-#8 AWG | 2" RSC |
| JB A2 | 1-9-C | 3-#8 AWG | 1 1/2" RSC |
| 1-9-C | 1-10-C | 3-#8 AWG | 2" RSC |
| 1-10-C | JB A3 | 3-#8 AWG | 1 1/2" RSC |
| JB A3 | JB A4 | 3-#8 AWG | 2" RSC |
| JB A4 | 1-18-C | 3-#8 AWG | 1 1/2" RSC |

SERVICE AREA - A (CMT 1) SERVICE POLE WITH 1-180-V 1-PHASE SERVICE, BASE MOUNTED LIGHTING CONTROL CABINET WITH 1-60 AMP BREAKER AND 2-15 AMP CIRCUITS



STA. 200+50 @ KY 237
STA. 50+00 @ CAMP ERNST ROAD



LIGHTING PLAN
KY 237 STA. 195+00 TO STA. 206+00
CAMP ERNST RD STA. 45+00 TO 50+00

SIGNING

ESTIMATE OF QUANTITIES

| ITEM | CODE NUMBER | UNIT | PROJECT | QUANTITY | TOTALS | ITEM | CODE NUMBER | UNIT | PROJECT | QUANTITY | TOTALS |
|--|-------------|---------|---------|----------|--------|--------------------------------|-------------|------|---------|----------|--------|
| | | | | | | | | | | | |
| GROUND MOUNTED SIGN SUPPORTS | | | | | | OVERHEAD SIGN SUPPORTS ⑫ | | | | | |
| ① TYPE A | 6400 | LBS. | | | | OSS ALUMINUM 60 FT TRUSS | 6422 | EACH | | | |
| TYPE C | 6441 | LBS. | | | | OSS ALUMINUM 65 FT TRUSS | 6424 | EACH | | | |
| FOOTINGS FOR SIGNS | | | | | | OSS ALUMINUM 70 FT TRUSS | 6426 | EACH | | | |
| CONCRETE - CLASS "A" FOR SIGNS REINFORCEMENT STEEL | 6490 | CU. YD. | 0.65 | | | OSS ALUMINUM 75 FT TRUSS | 6436 | EACH | | | |
| | 6491 | LBS. | | | | OSS ALUMINUM 80 FT TRUSS | 6438 | EACH | | | |
| SIGN BASE MATERIAL ALUMINUM | | | | | | OSS ALUMINUM 85 FT TRUSS | 6443 | EACH | | | |
| ② PANEL SIGNS | 6405 | SQ.FT. | | | | OSS ALUMINUM 90 FT TRUSS | 6445 | EACH | | | |
| ③ SHEETING SIGNS | | | | | | OSS ALUMINUM 95 FT TRUSS | 6453 | EACH | | | |
| 0.080 GAUGE | 6406 | SQ.FT. | 350 | | | OSS ALUMINUM 100 FT TRUSS | 6455 | EACH | | | |
| 0.125 GAUGE | 6407 | SQ.FT. | 80 | | | OSS ALUMINUM 105 FT TRUSS | 6457 | EACH | | | |
| STEEL POST ④⑤ | | | | | | OSS ALUMINUM 110 FT TRUSS | 6459 | EACH | | | |
| TYPE 1 | 6410 | LN.FT. | 300 | | | OSS ALUMINUM 115 FT TRUSS | 6461 | EACH | | | |
| TYPE 2 | 6411 | LN.FT. | 900 | | | OSS ALUMINUM 120 FT TRUSS | 6463 | EACH | | | |
| ⑥ TYPE D | 21596ND | EACH | 10 | | | OSS ALUMINUM 125 FT TRUSS | 6465 | EACH | | | |
| ⑦ MILE MARKERS REFERENCE MARKERS | 6412 | EACH | | | | OSS ALUMINUM 130 FT TRUSS | 6467 | EACH | | | |
| | 4903 | EACH | | | | OSS ALUMINUM 135 FT TRUSS | 6469 | EACH | | | |
| DELINEATORS | | | | | | OSS ALUMINUM 140 FT TRUSS | 6471 | EACH | | | |
| WHITE | 6413 | EACH | | | | OSS GALV STEEL CANTILEVER MOD | 6201 | EACH | | | |
| AMBER | 6414 | EACH | | | | OSS GALV STEEL CANTILEVER | 6415 | EACH | | | |
| REMOVAL ITEMS ⑧⑨ | | | | | | SIGN BRIDGE ATTACHMENT BRACKET | 6448 | EACH | | | |
| REMOVE OVERHEAD SIGN SUPPORT STRUCTURE | 6449 | EACH | | | | MISCELLANEOUS | | | | | |
| ⑩ REMOVE OVERHEAD SIGN SUPPORT STRUCTURE CONCRETE BASE | | | | | | BARRIER MOUNTING BRACKET | 4904 | EACH | | | |
| ⑪ REMOVE SIGN SUPPORT BEAMS | 6450 | EACH | | | | BARRIER WALL POST | 20912ND | EACH | | | |
| REMOVE SIGN | 21373ND | EACH | 5 | | | ROADWAY CROSS SECTION | 20419ND | EACH | | | |
| MOVE CANTILEVER SIGN SUPPORT | 20995ND | EACH | | | | FLEXIBLE DELINEATOR POSTS | | | | | |
| REMOVE AND RELOCATE SIGN | 20418ED | EACH | | | | ⑬ WHITE | 6417 | EACH | | | |
| STEEL "W" BEAM GUARDRAIL | | | | | | YELLOW | 6418 | EACH | | | |
| SINGLE FACE | 2351 | LN.FT. | | | | STAKING | 2726 | L.S. | | | |
| DOUBLE FACE | 2352 | LN.FT. | | | | FLASHING ARROW | 2775 | EACH | | | |
| END TREATMENT TYPE 1 | 2367 | EACH | | | | DEMOBILIZATION | 2569 | L.S. | | | |
| END TREATMENT TYPE 2A | 2369 | EACH | | | | MAINTAIN & CONTROL TRAFFIC | 2650 | L.S. | | | |
| BARCODE SIGN INVENTORY | 24631EC | EACH | 81 | | | | | | | | |

NOTES :

- (1) PAYMENT FOR GROUND MOUNTED SIGN SUPPORTS TYPE A AND TYPE C SHALL BE BASED ON THE NOMINAL WEIGHT OF THE BEAMS, THE NECESSARY GALVANIZING, HARDWARE, ETC. IS TO BE CONSIDERED INCIDENTAL. QUANTITIES FOR TYPE C SUPPORTS SHALL INCLUDE ALL NECESSARY HARDWARE TO FORM COMPLETE BREAK-AWAY BEAMS. SEE PANEL SIGN DETAIL SHEET.
- (2) QUANTITY SHALL INCLUDE ALL COPY AND HARDWARE NECESSARY TO FORM COMPLETE SIGNS. NO DEDUCTION IN AREA IS TO BE MADE FOR ROUNDING OF CORNERS.
- (3) WITH PERMISSION OF THE ENGINEER, SHEETING SIGNS ON THE RAMPS AND SIDE ROADS MAY BE MOVED TO BE COMPATIBLE WITH THE EXISTING SIGNS.
- (4) QUANTITY IS ESTIMATED. THE EXACT LENGTH SHALL BE DETERMINED BY THE CONTRACTOR AND APPROVED BY THE ENGINEER.
- (5) WHERE REQUIRED, BRACING FOR SHEETING SIGNS SHALL BE INCIDENTAL TO STEEL POST. SEE SHEETING SIGN DETAIL SHEET.
- (6) QUANTITY SHALL INCLUDE ALL MATERIAL NECESSARY TO FORM A COMPLETE BREAK-AWAY ASSEMBLY. TYPE I POSTS AND CONCRETE SHALL BE PAID SEPARATELY. SEE SHEETING SIGN DETAIL SHEET.
- (7) QUANTITY SHALL INCLUDE SIGN AND POST.
- (8) ALL MATERIALS REMOVED AND NOT REUSED, SUCH AS SIGNS, SIGN LIGHTS, SIGN SUPPORTS, ETC. SHALL BECOME THE PROPERTY OF THE CONTRACTOR.
- (9) THE REMOVAL OF ALL TYPE I OR II POSTS AND ALL SHEETING SIGNS SHALL BE INCIDENTAL TO THE PROJECT WITH NO ADDITIONAL PAYMENT BEING ALLOWED. ALL MATERIAL SHALL BE STORED IN ACCORDANCE WITH NOTE (8) ABOVE.
- (10) WHERE THE REMOVAL OF OVERHEAD STRUCTURE CONCRETE BASE IS CALLED FOR, THE BASE IS TO BE REMOVED TO A MINIMUM OF ONE FOOT (1') BELOW THE GROUND LINE. BACKFILLED TO EXISTING GROUND LINE, AND THE DISTURBED AREAS RESEDED.
- (11) WHERE THE REMOVAL OF BEAM SIGN SUPPORTS IS CALLED FOR, THE BEAM AND ANY CONCRETE PROJECTING ABOVE THE GROUND LINE ARE TO BE CUT OFF A MINIMUM OF ONE FOOT (1') BELOW EXISTING GROUND LINE OR THE ENTIRE BEAM AND CONCRETE BASE ARE TO BE REMOVED COMPLETELY AND BACKFILLED TO EXISTING GROUND LINE.
- (12) QUANTITY SHALL INCLUDE W-BARS AND ALL HARDWARE NECESSARY FOR ATTACHING SIGNS TO SUPPORTS.
- (13) QUANTITY IS ESTIMATED. THE EXACT NUMBER SHALL BE DETERMINED BY THE CONTRACTOR AND APPROVED BY THE ENGINEER. SEE SIGNING POSITIONING DETAIL SHEET FOR DELINEATOR PLACEMENT.

SIGNING

ESTIMATE OF QUANTITIES

NOTES :

- (1) PAYMENT FOR GROUND MOUNTED SIGN SUPPORTS TYPE A AND TYPE C SHALL BE BASED ON THE NOMINAL WEIGHT OF THE BEAMS, THE NECESSARY GALVANIZING, HARDWARE, ETC. IS TO BE CONSIDERED INCIDENTAL. QUANTITIES FOR TYPE C SUPPORTS SHALL INCLUDE ALL NECESSARY HARDWARE TO FORM COMPLETE BREAK-AWAY BEAMS. SEE PANEL SIGN DETAIL SHEET.
- (2) QUANTITY SHALL INCLUDE ALL COPY AND HARDWARE NECESSARY TO FORM COMPLETE SIGNS. NO DEDUCTION IN AREA IS TO BE MADE FOR ROUNDING OF CORNERS.
- (3) WITH PERMISSION OF THE ENGINEER, SHEETING SIGNS ON THE RAMPS AND SIDE ROADS MAY BE MOVED TO BE COMPATIBLE WITH THE EXISTING SIGNS.
- (4) QUANTITY IS ESTIMATED. THE EXACT LENGTH SHALL BE DETERMINED BY THE CONTRACTOR AND APPROVED BY THE ENGINEER.
- (5) WHERE REQUIRED, BRACING FOR SHEETING SIGNS SHALL BE INCIDENTAL TO STEEL POST. SEE SHEETING SIGN DETAIL SHEET.
- (6) QUANTITY SHALL INCLUDE ALL MATERIAL NECESSARY TO FORM A COMPLETE BREAK-AWAY ASSEMBLY. TYPE I POSTS AND CONCRETE SHALL BE PAID SEPARATELY. SEE SHEETING SIGN DETAIL SHEET.
- (7) QUANTITY SHALL INCLUDE SIGN AND POST.
- (8) ALL MATERIALS REMOVED AND NOT REUSED, SUCH AS SIGNS, SIGN LIGHTS, SIGN SUPPORTS, ETC. SHALL BECOME THE PROPERTY OF THE CONTRACTOR.
- (9) THE REMOVAL OF ALL TYPE I OR II POSTS AND ALL SHEETING SIGNS SHALL BE INCIDENTAL TO THE PROJECT WITH NO ADDITIONAL PAYMENT BEING ALLOWED. ALL MATERIAL SHALL BE STORED IN ACCORDANCE WITH NOTE (8) ABOVE.
- (10) WHERE THE REMOVAL OF OVERHEAD STRUCTURE CONCRETE BASE IS CALLED FOR, THE BASE IS TO BE REMOVED TO A MINIMUM OF ONE FOOT (1') BELOW THE GROUND LINE. BACKFILLED TO EXISTING GROUND LINE, AND THE DISTURBED AREAS RESEDED.
- (11) WHERE THE REMOVAL OF BEAM SIGN SUPPORTS IS CALLED FOR, THE BEAM AND ANY CONCRETE PROJECTING ABOVE THE GROUND LINE ARE TO BE CUT OFF A MINIMUM OF ONE FOOT (1') BELOW EXISTING GROUND LINE OR THE ENTIRE BEAM AND CONCRETE BASE ARE TO BE REMOVED COMPLETELY AND BACKFILLED TO EXISTING GROUND LINE.
- (12) QUANTITY SHALL INCLUDE W-BARS AND ALL HARDWARE NECESSARY FOR ATTACHING SIGNS TO SUPPORTS.
- (13) QUANTITY IS ESTIMATED. THE EXACT NUMBER SHALL BE DETERMINED BY THE CONTRACTOR AND APPROVED BY THE ENGINEER. SEE SIGNING POSITIONING DETAIL SHEET FOR DELINEATOR PLACEMENT.

| ITEM | CODE NUMBER | UNIT | PROJECT | QUANTITY | TOTALS | ITEM | CODE NUMBER | UNIT | PROJECT | QUANTITY | TOTALS |
|--|-------------|---------|---------|----------|--------|--------------------------------|-------------|------|---------|----------|--------|
| | | | | | | | | | | | |
| GROUND MOUNTED SIGN SUPPORTS | | | | | | OVERHEAD SIGN SUPPORTS ⑫ | | | | | |
| ⓐ TYPE A | 6400 | LBS. | | | | OSS ALUMINUM 60 FT TRUSS | 6422 | EACH | | | |
| ⓑ TYPE C | 6441 | LBS. | | | | OSS ALUMINUM 65 FT TRUSS | 6424 | EACH | | | |
| FOOTINGS FOR SIGNS | | | | | | OSS ALUMINUM 70 FT TRUSS | 6426 | EACH | | | |
| CONCRETE - CLASS "A" FOR SIGNS | 6490 | CU. YD. | 0.65 | | | OSS ALUMINUM 75 FT TRUSS | 6436 | EACH | | | |
| REINFORCEMENT STEEL | 6491 | LBS. | | | | OSS ALUMINUM 80 FT TRUSS | 6438 | EACH | | | |
| SIGN BASE MATERIAL | | | | | | OSS ALUMINUM 85 FT TRUSS | 6443 | EACH | | | |
| ALUMINUM | | | | | | OSS ALUMINUM 90 FT TRUSS | 6445 | EACH | | | |
| ② PANEL SIGNS | 6405 | SQ.FT. | | | | OSS ALUMINUM 95 FT TRUSS | 6453 | EACH | | | |
| ③ SHEETING SIGNS | | | | | | OSS ALUMINUM 100 FT TRUSS | 6455 | EACH | | | |
| 0.080 GAUGE | 6406 | SO.FT. | 350 | | | OSS ALUMINUM 105 FT TRUSS | 6457 | EACH | | | |
| 0.125 GAUGE | 6407 | SO.FT. | 80 | | | OSS ALUMINUM 110 FT TRUSS | 6459 | EACH | | | |
| STEEL POST ④⑤ | | | | | | OSS ALUMINUM 115 FT TRUSS | 6461 | EACH | | | |
| TYPE 1 | 6410 | LN.FT. | 300 | | | OSS ALUMINUM 120 FT TRUSS | 6463 | EACH | | | |
| TYPE 2 | 6411 | LN.FT. | 900 | | | OSS ALUMINUM 125 FT TRUSS | 6465 | EACH | | | |
| ⑥ TYPE D | 21596ND | EACH | 10 | | | OSS ALUMINUM 130 FT TRUSS | 6467 | EACH | | | |
| ⑦ MILE MARKERS | 6412 | EACH | | | | OSS ALUMINUM 135 FT TRUSS | 6469 | EACH | | | |
| REFERENCE MARKERS | 4903 | EACH | | | | OSS ALUMINUM 140 FT TRUSS | 6471 | EACH | | | |
| DELINEATORS | | | | | | OSS GALV STEEL CANTILEVER MOD | 6201 | EACH | | | |
| WHITE | 6413 | EACH | | | | OSS GALV STEEL CANTILEVER | 6415 | EACH | | | |
| AMBER | 6414 | EACH | | | | SIGN BRIDGE ATTACHMENT BRACKET | 6448 | EACH | | | |
| REMOVAL ITEMS ⑧⑨ | | | | | | MISCELLANEOUS | | | | | |
| REMOVE OVERHEAD SIGN SUPPORT STRUCTURE | 6449 | EACH | | | | BARRIER MOUNTING BRACKET | 4904 | EACH | | | |
| ⑩ REMOVE OVERHEAD SIGN SUPPORT STRUCTURE CONCRETE BASE | 6450 | EACH | | | | BARRIER WALL POST | 20912ND | EACH | | | |
| ⑪ REMOVE SIGN SUPPORT BEAMS | 6451 | EACH | | | | ROADWAY CROSS SECTION | 20419ND | EACH | | | |
| REMOVE SIGN | 21373ND | EACH | 5 | | | FLEXIBLE DELINEATOR POSTS | | | | | |
| MOVE CANTILEVER SIGN SUPPORT | 20995ND | EACH | | | | Ⓜ WHITE | 6417 | EACH | | | |
| REMOVE AND RELOCATE SIGN | 20418ED | EACH | | | | Ⓨ YELLOW | 6418 | EACH | | | |
| STEEL "W" BEAM GUARDRAIL | | | | | | STAKING | 2726 | L.S. | | | |
| SINGLE FACE | 2351 | LN.FT. | | | | FLASHING ARROW | 2775 | EACH | | | |
| DOUBLE FACE | 2352 | LN.FT. | | | | DEMOBILIZATION | 2569 | L.S. | | | |
| END TREATMENT TYPE 1 | 2367 | EACH | | | | MAINTAIN & CONTROL TRAFFIC | 2650 | L.S. | | | |
| END TREATMENT TYPE 2A | 2369 | EACH | | | | | | | | | |
| BARCODE SIGN INVENTORY | 24631EC | EACH | 81 | | | | | | | | |